

MSBA Enrollment Projection – Manchester Essex Regional

Historic Enrollment Data (DESE)

YEAR	PK	K	1	2	3	4	5	6	7	8	9	10	11	12	K-12	K-5	6-8	9-12
1993-94	0	103	103	121	109	105	111	94	95	105	67	49	57	41	1,160	652	294	214
1994-95	0	116	114	101	127	112	114	117	100	99	58	58	51	55	1,222	684	316	222
1995-96	0	94	119	116	102	124	118	113	114	101	68	58	55	50	1,232	673	328	231
1996-97	0	96	98	120	121	104	123	122	116	114	73	76	62	50	1,275	662	352	261
1997-98	0	100	104	100	121	117	99	127	125	121	82	75	76	61	1,308	641	373	294
1998-99	0	114	94	98	102	124	113	106	126	126	90	77	79	70	1,319	645	358	316
1999-00	0	98	114	88	92	105	119	120	98	128	83	89	79	78	1,291	616	346	329
2000-01	0	88	99	107	99	94	101	113	120	91	102	83	91	78	1,266	588	324	354
2001-02	0	84	92	98	108	100	99	97	109	120	96	94	76	85	1,258	581	326	351
2002-03	0	94	88	101	105	110	97	89	92	106	99	85	96	74	1,236	595	287	354
2003-04	0	83	98	90	97	104	104	91	89	94	100	98	91	87	1,226	576	274	376
2004-05	0	87	100	102	100	98	106	104	91	90	106	94	99	91	1,268	593	285	390
2005-06	9	90	90	99	108	105	103	105	107	93	104	101	96	98	1,299	595	305	399
2006-07	10	88	94	92	107	109	110	102	103	106	101	95	99	99	1,305	600	311	394
2007-08	19	92	92	96	107	112	110	111	109	106	114	100	98	94	1,341	609	326	406
2008-09	19	100	106	97	98	106	115	113	106	107	107	109	102	97	1,363	622	326	415
2009-10	40	109	101	110	104	100	107	122	116	109	117	110	110	102	1,417	631	347	439
2010-11	34	110	116	115	116	108	108	110	127	113	123	113	116	109	1,484	673	350	461
2011-12	35	99	112	124	122	122	113	109	118	125	121	126	110	113	1,514	692	352	470
2012-13	26	106	108	116	129	126	126	117	112	116	125	125	116	114	1,536	711	345	480
2013-14	20	99	115	109	113	130	130	126	119	110	118	116	115	112	1,512	696	355	461
2014-15	19	81	108	117	116	117	133	132	124	120	101	111	115	113	1,488	672	376	440
2015-16	17	62	87	106	119	115	121	133	131	120	111	99	108	114	1,426	610	384	432

Historic Birth Data (MA Department of Public Health)

Maternal Age	1989	1990	1991	1992	1993	1994	1995	1996	1997	1998	1999	2000	2001	2002	2003	2004	2005	2006	2007	2008	2009	2010	2011	2012	2013
10-14 Yrs	0	0	0	0	0	0	0	0	0	0	0	0	0	0	0	0	0	0	0	0	0	0	0	0	0
15-19 Yrs	0	0	0	0	0	0	0	0	0	0	0	0	0	0	0	0	0	0	0	0	0	0	0	0	0
20-24 Yrs	6	10	5	10	8	5	0	0	0	0	5	0	0	0	0	0	0	5	0	0	0	0	0	0	0
25-29 Yrs	42	20	20	25	35	19	30	27	12	18	14	9	11	7	20	12	20	8	0	8	0	5	6	0	7
30-34 Yrs	45	42	37	36	55	51	63	44	45	32	38	33	30	34	37	35	32	27	32	24	21	19	18	20	17
35-39 Yrs	17	20	22	19	25	26	18	23	29	18	18	25	21	39	29	31	33	21	27	28	19	22	30	20	19
40-44 Yrs	0	0	0	5	0	0	5	0	6	0	0	0	0	0	5	0	11	6	0	0	0	5	6	6	15
Total Births	117	100	98	95	130	106	127	102	101	76	82	81	68	89	98	81	99	74	76	68	59	61	67	59	65

MSBA Enrollment Projection – Manchester Essex Regional

Female Population Data

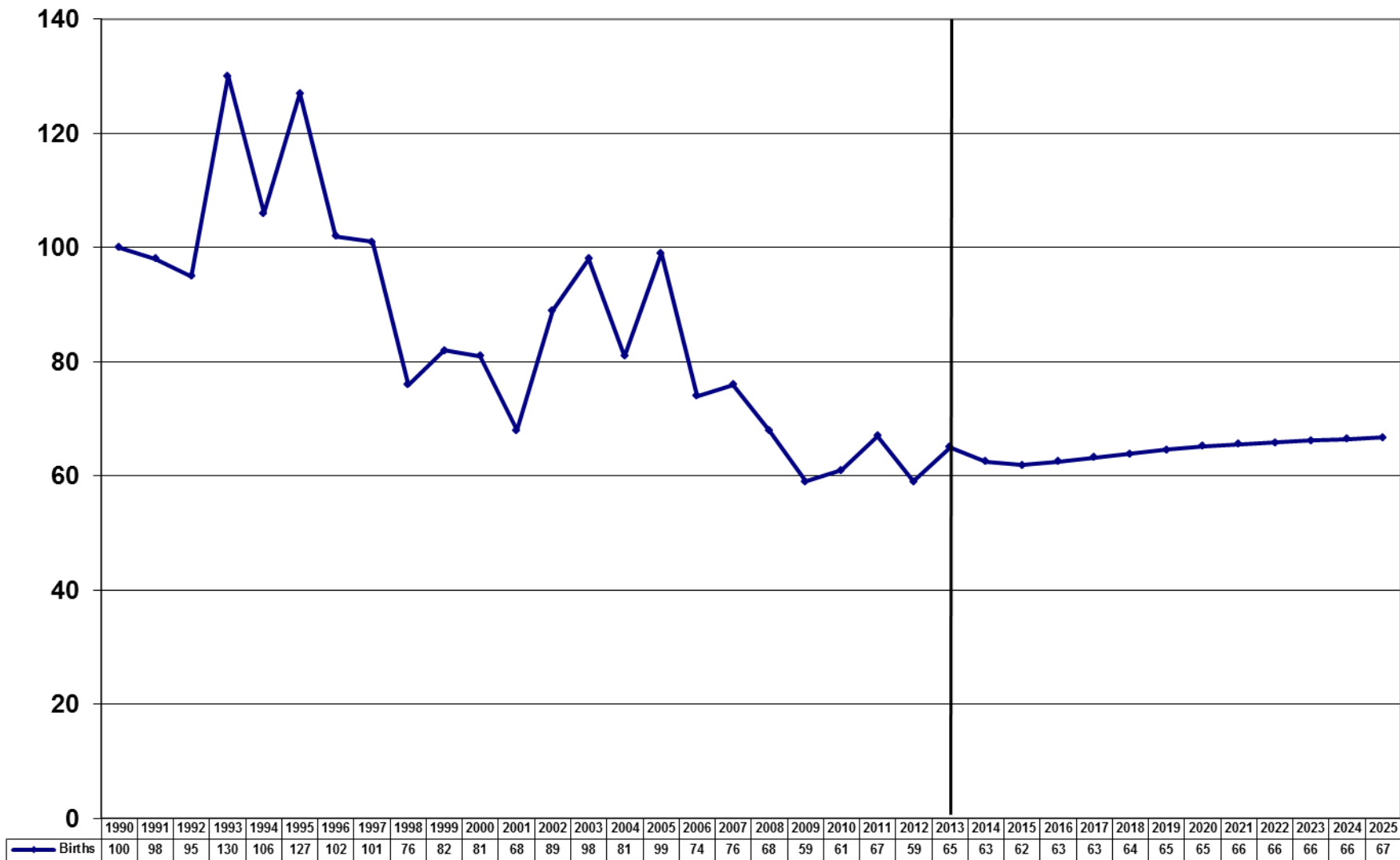
Maternal Age	US Census Data			U Mass Donohue Institute				2011-2013 Avg Fertility Rate
	1990	2000	2010	2015	2020	2025	2030	
10-14 Yrs	239	354	325	353	326	275	277	0.00%
15-19 Yrs	218	233	262	215	244	220	174	0.00%
20-24 Yrs	214	144	151	172	130	163	138	0.00%
25-29 Yrs	334	166	159	163	181	141	177	3.02%
30-34 Yrs	346	250	155	189	190	206	163	12.83%
35-39 Yrs	383	373	232	197	227	225	238	12.25%
40-44 Yrs	430	393	334	237	210	236	232	3.61%
Total Females	4,428	4,421	4,481	4,419	4,380	4,314	4,217	1.43%

Birth Projections

Maternal Age	2014	2015	2016	2017	2018	2019	2020	2021	2022	2023	2024	2025	2026	2027	2028	2029	2030
10-14 Yrs	0	0	0	0	0	0	0	0	0	0	0	0	0	0	0	0	0
15-19 Yrs	0	0	0	0	0	0	0	0	0	0	0	0	0	0	0	0	0
20-24 Yrs	0	0	0	0	0	0	0	0	0	0	0	0	0	0	0	0	0
25-29 Yrs	5	5	5	5	5	5	5	5	5	5	4	4	4	5	5	5	5
30-34 Yrs	23	24	24	24	24	24	24	25	25	26	26	26	25	24	23	22	21
35-39 Yrs	25	24	25	26	26	27	28	28	28	28	28	28	28	28	29	29	29
40-44 Yrs	9	9	8	8	8	8	8	8	8	8	8	9	8	8	8	8	8
Totals	63	62	63	63	64	65	65	66	66	66	66	67	66	66	65	64	64

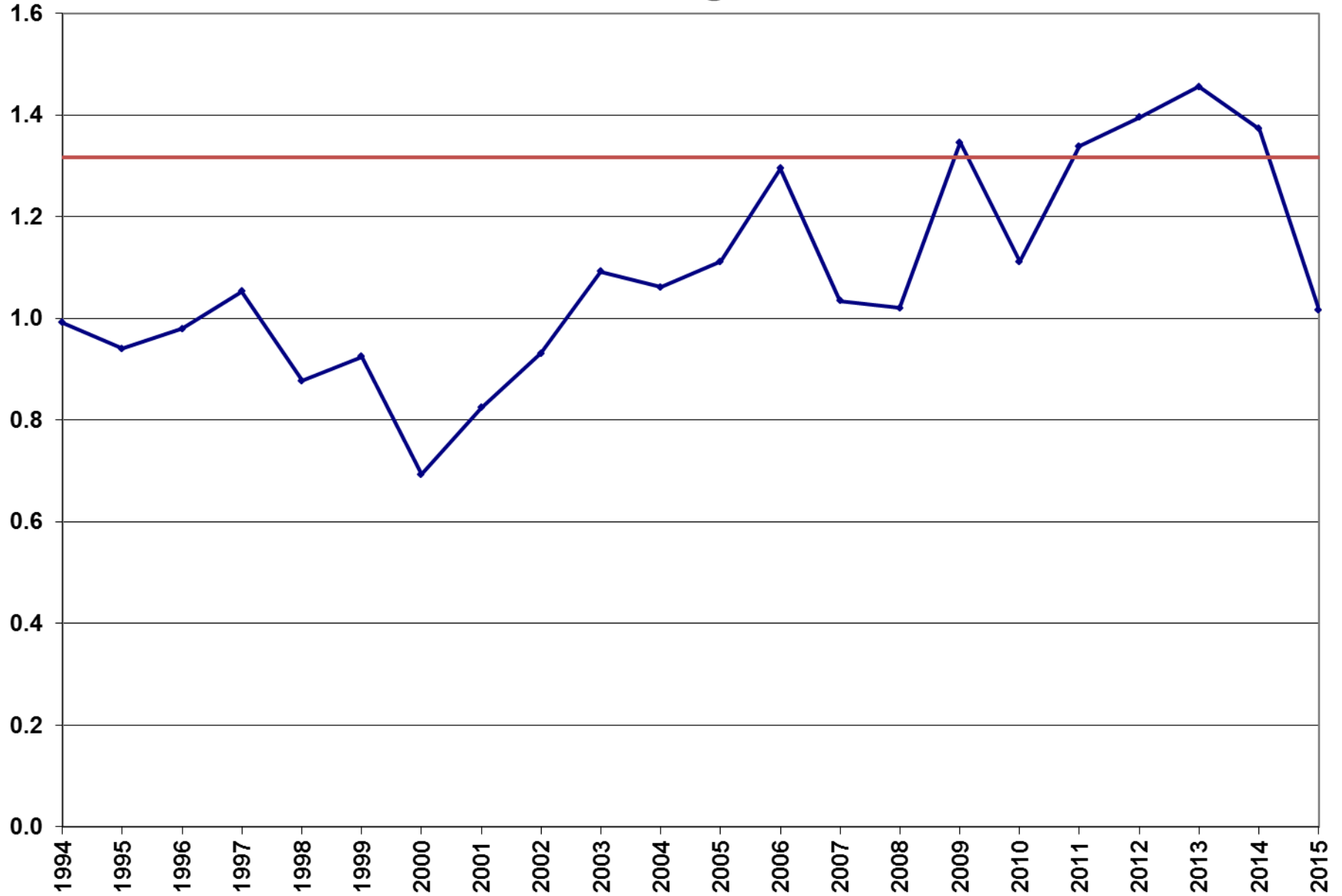
MSBA Enrollment Projection – Manchester Essex Regional

Births



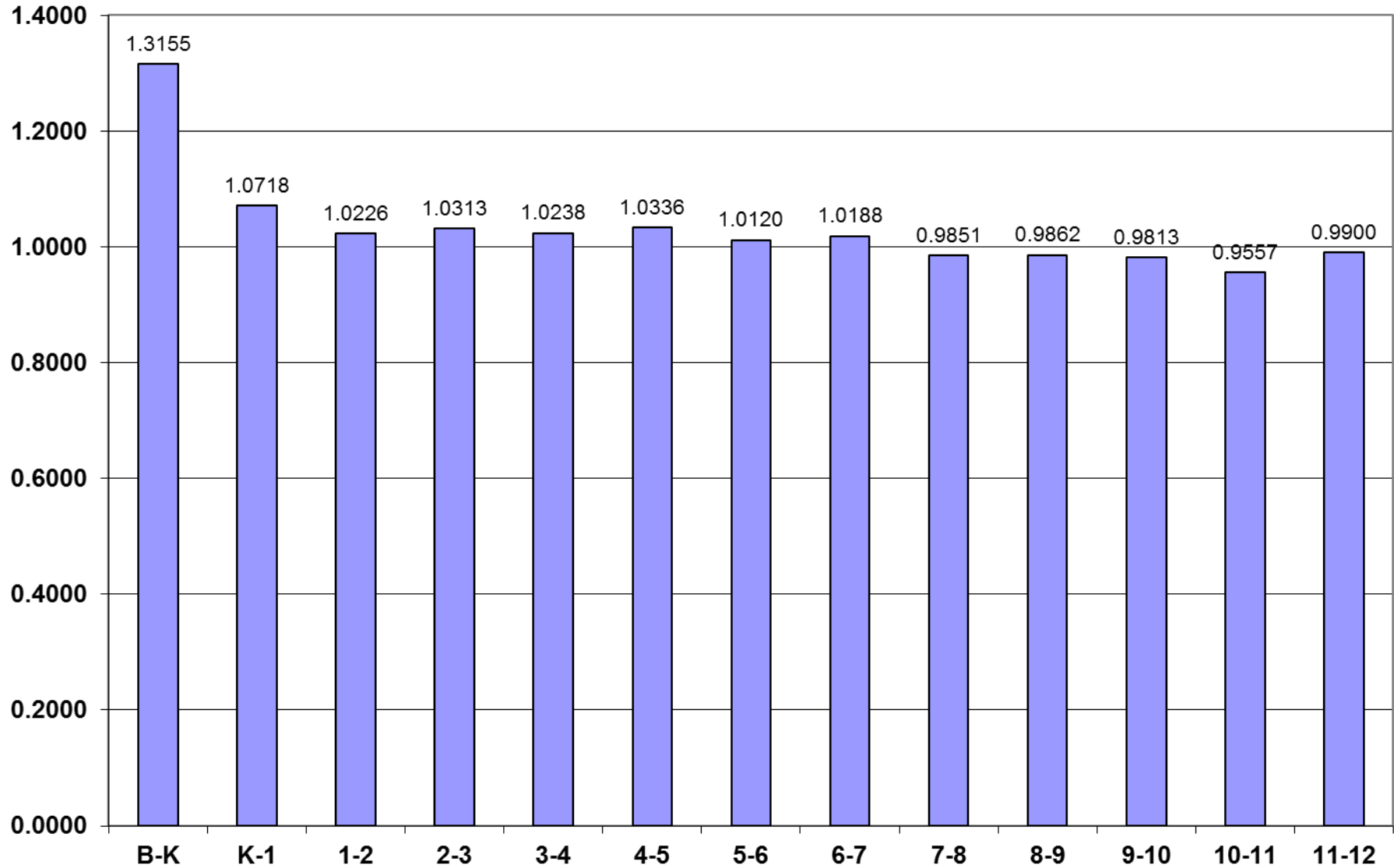
MSBA Enrollment Projection – Manchester Essex Regional

Birth to Kindergarten Ratio



MSBA Enrollment Projection – Manchester Essex Regional

Grade-to-Grade Ratios - 5 Yr Average



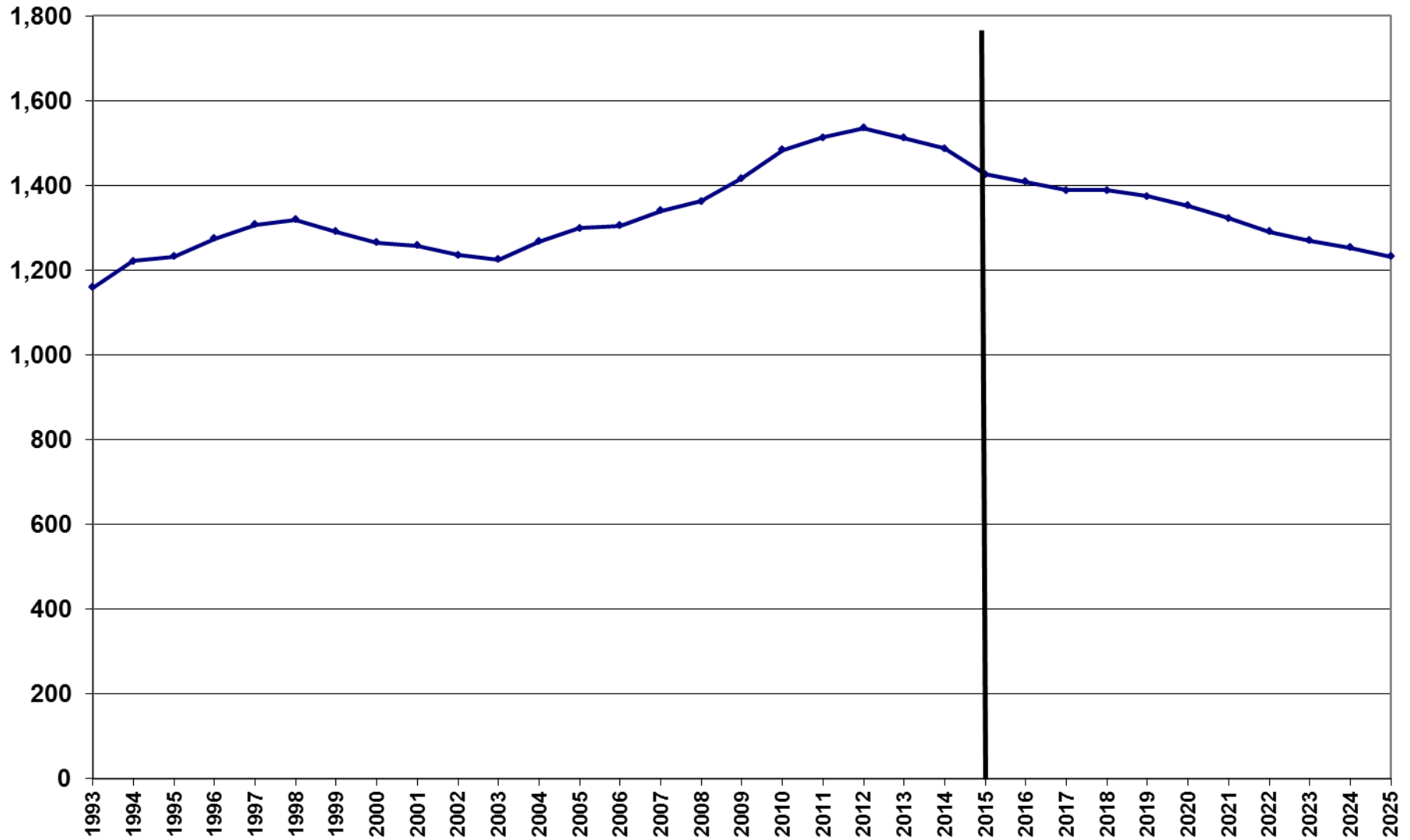
MSBA Enrollment Projection – Manchester Essex Regional

Base Enrollment Projections

YEAR	K	1	2	3	4	5	6	7	8	9	10	11	12	TOTAL	K-4	5-8	9-12
1993	103	103	121	109	105	111	94	95	105	67	49	57	41	1,160	541	405	214
1994	116	114	101	127	112	114	117	100	99	58	58	51	55	1,222	570	430	222
1995	94	119	116	102	124	118	113	114	101	68	58	55	50	1,232	555	446	231
1996	96	98	120	121	104	123	122	116	114	73	76	62	50	1,275	539	475	261
1997	100	104	100	121	117	99	127	125	121	82	75	76	61	1,308	542	472	294
1998	114	94	98	102	124	113	106	126	126	90	77	79	70	1,319	532	471	316
1999	98	114	88	92	105	119	120	98	128	83	89	79	78	1,291	497	465	329
2000	88	99	107	99	94	101	113	120	91	102	83	91	78	1,266	487	425	354
2001	84	92	98	108	100	99	97	109	120	96	94	76	85	1,258	482	425	351
2002	94	88	101	105	110	97	89	92	106	99	85	96	74	1,236	498	384	354
2003	83	98	90	97	104	104	91	89	94	100	98	91	87	1,226	472	378	376
2004	87	100	102	100	98	106	104	91	90	106	94	99	91	1,268	487	391	390
2005	90	90	99	108	105	103	105	107	93	104	101	96	98	1,299	492	408	399
2006	88	94	92	107	109	110	102	103	106	101	95	99	99	1,305	490	421	394
2007	92	92	96	107	112	110	111	109	106	114	100	98	94	1,341	499	436	406
2008	100	106	97	98	106	115	113	106	107	107	109	102	97	1,363	507	441	415
2009	109	101	110	104	100	107	122	116	109	117	110	110	102	1,417	524	454	439
2010	110	116	115	116	108	108	110	127	113	123	113	116	109	1,484	565	458	461
2011	99	112	124	122	122	113	109	118	125	121	126	110	113	1,514	579	465	470
2012	106	108	116	129	126	126	117	112	116	125	125	116	114	1,536	585	471	480
2013	99	115	109	113	130	130	126	119	110	118	116	115	112	1,512	566	485	461
2014	81	108	117	116	117	133	132	124	120	101	111	115	113	1,488	539	509	440
2015	62	87	106	119	115	121	133	131	120	111	99	108	114	1,426	489	505	432
2016	88	66	89	109	122	119	122	135	129	118	109	95	107	1,409	474	505	429
2017	78	94	68	92	112	126	120	125	133	127	116	104	94	1,389	444	504	441
2018	86	83	97	70	94	116	127	123	123	132	125	111	103	1,388	430	489	471
2019	82	92	85	100	72	97	117	130	121	121	129	119	110	1,375	431	465	479
2020	81	88	94	88	102	74	98	119	128	119	119	123	118	1,352	453	419	479
2021	82	87	90	97	90	105	75	100	117	126	117	114	122	1,323	446	397	479
2022	83	88	89	93	99	93	107	76	99	116	124	112	113	1,291	452	375	465
2023	84	89	90	92	95	102	94	109	75	97	114	118	111	1,271	450	380	440
2024	85	90	91	93	94	98	104	96	107	74	95	109	117	1,254	453	405	395
2025	86	91	92	94	95	97	100	105	94	106	73	91	108	1,232	458	396	378
10 yr avg	95	104	108	113	115	117	118	117	113	114	110	109	107	1,439	534	465	440
5 yr avg	89	106	114	120	122	125	123	121	118	115	115	113	113	1,495	554	482	457
2 yr avg	72	98	112	118	116	127	133	128	120	106	105	112	114	1,457	514	507	436
5 yr proj	83	85	86	92	100	106	117	126	127	124	120	111	106	1,383	446	476	460
10 yr proj	84	87	89	93	97	103	106	112	113	114	112	110	110	1,328	449	434	446

MSBA Enrollment Projection – Manchester Essex Regional

Total Enrollment



MSBA Enrollment Projection – Manchester Essex Regional

Enrollment by Grade Group

